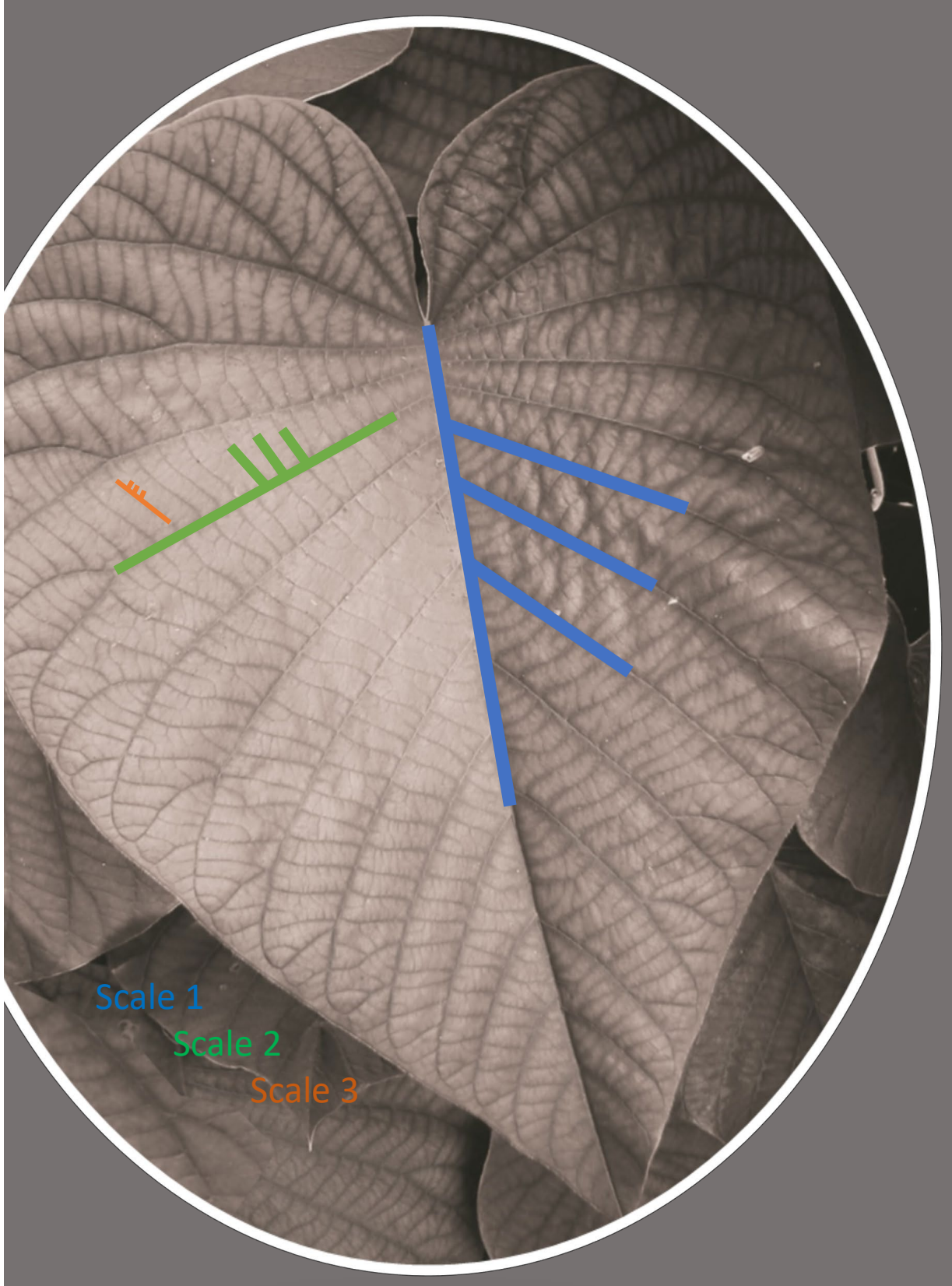
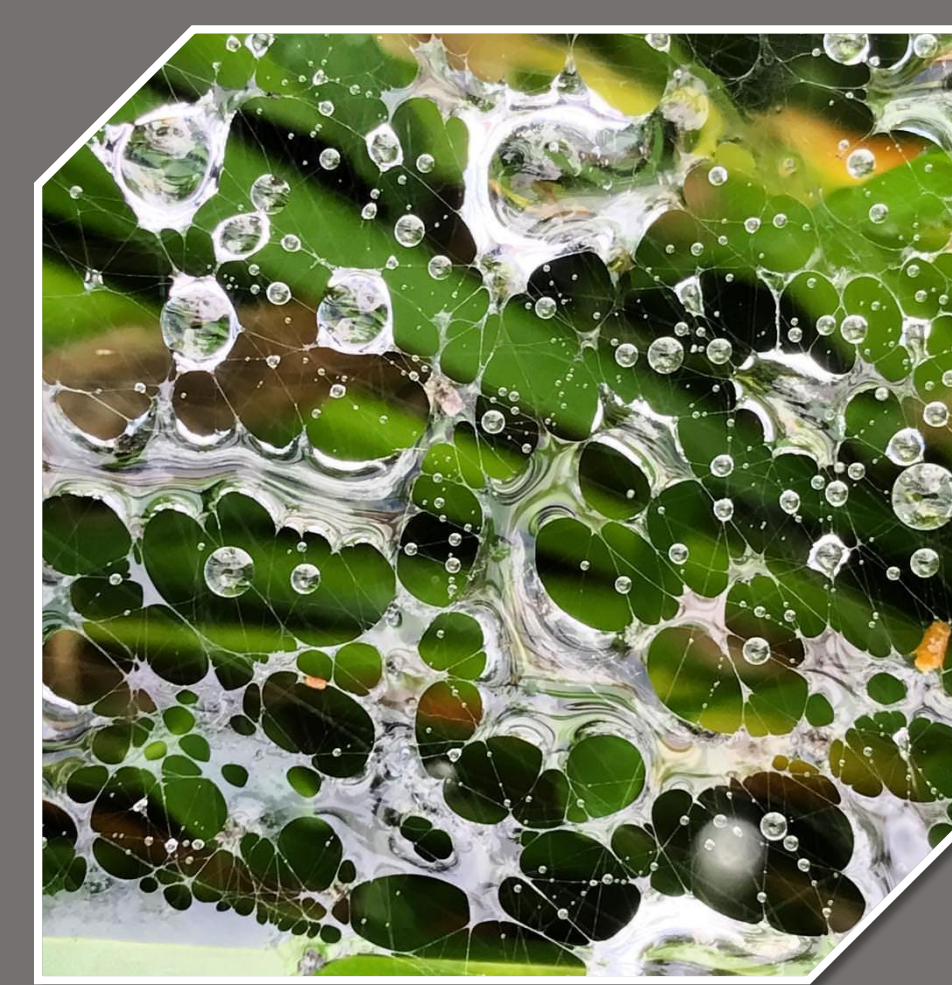


Patterns in Nature Fractals



Living beings value pattern recognition for success and survival in both animals and humans alike. There are neurological connectors in the brain that are used to recognize these turbulent and satisfying patterns with a process called superior pattern processing. The patterns found in nature can be mathematically defined as fractals. Architecture creates a healing environment by incorporating these mathematical qualities found in natural forms, such as fractals and fractal geometry.

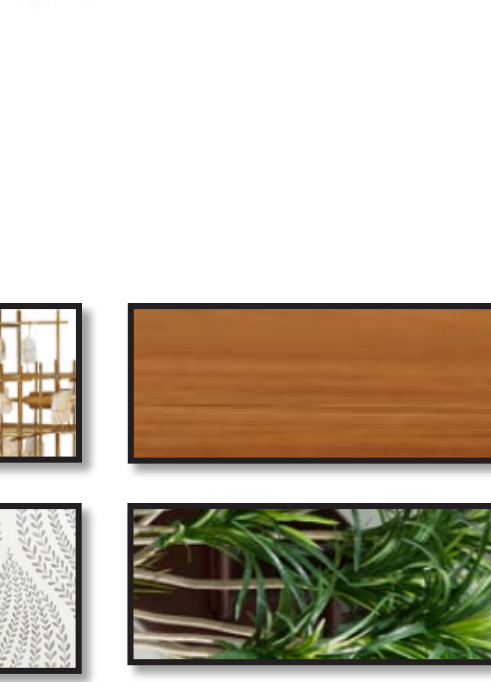
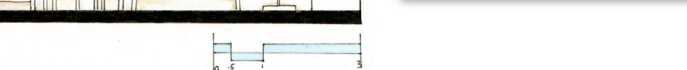
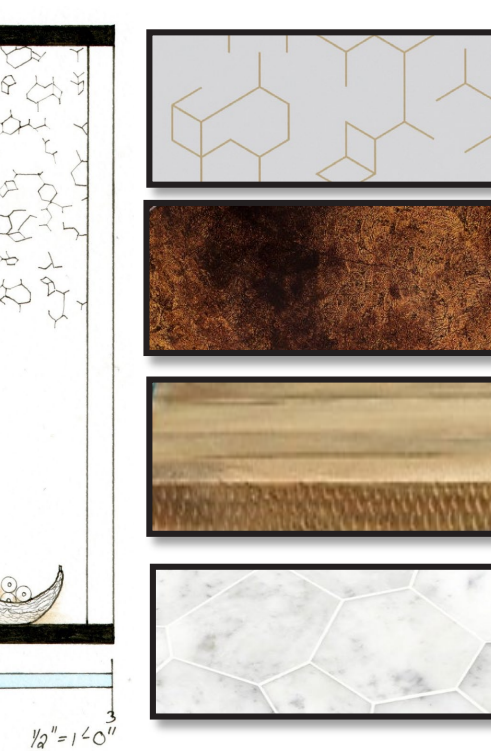
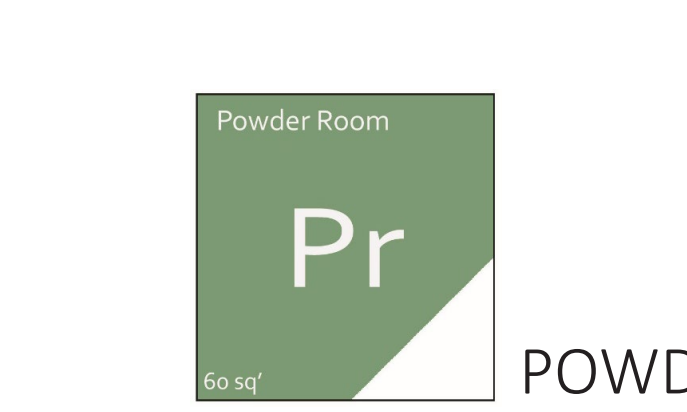
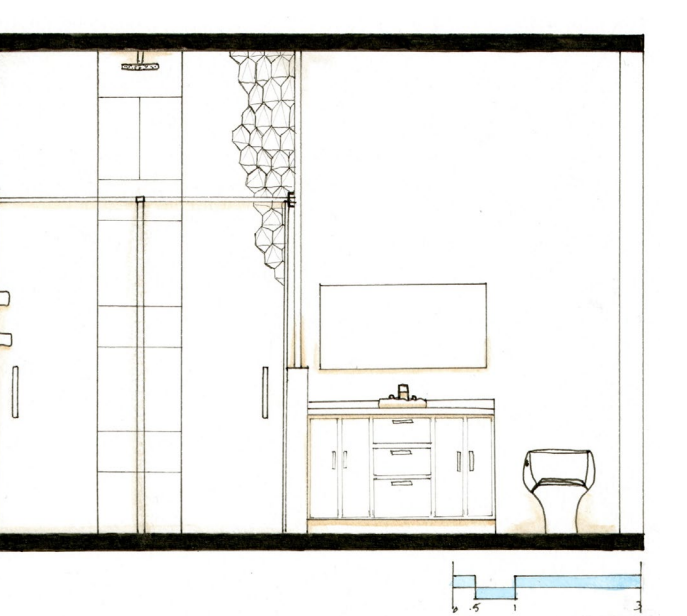
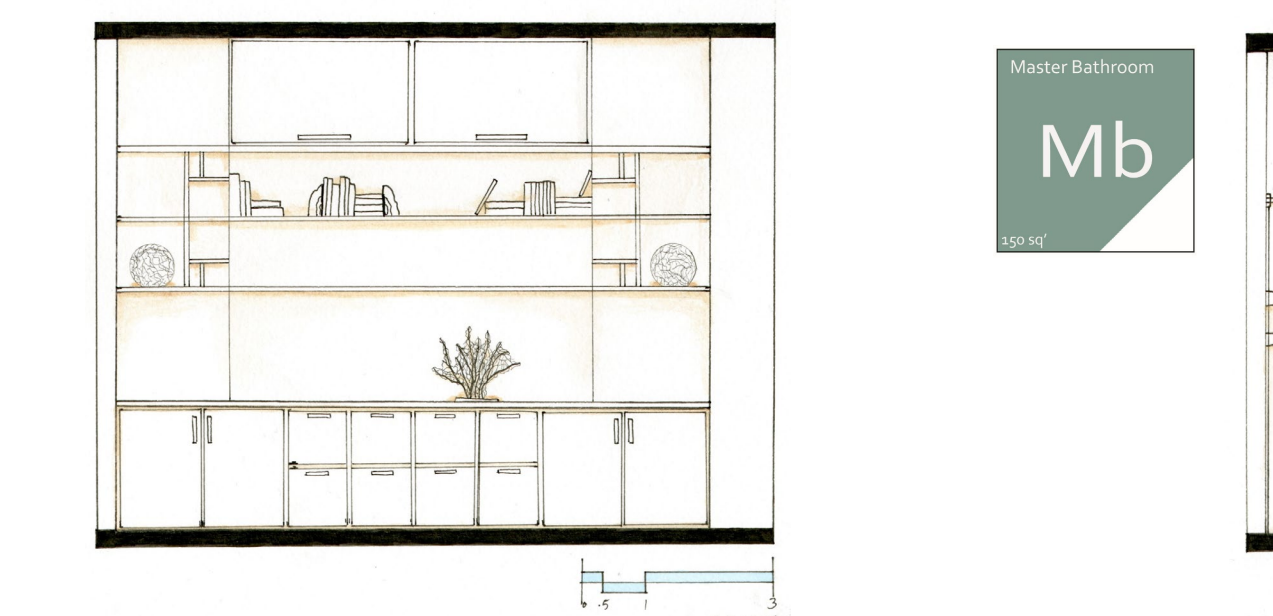
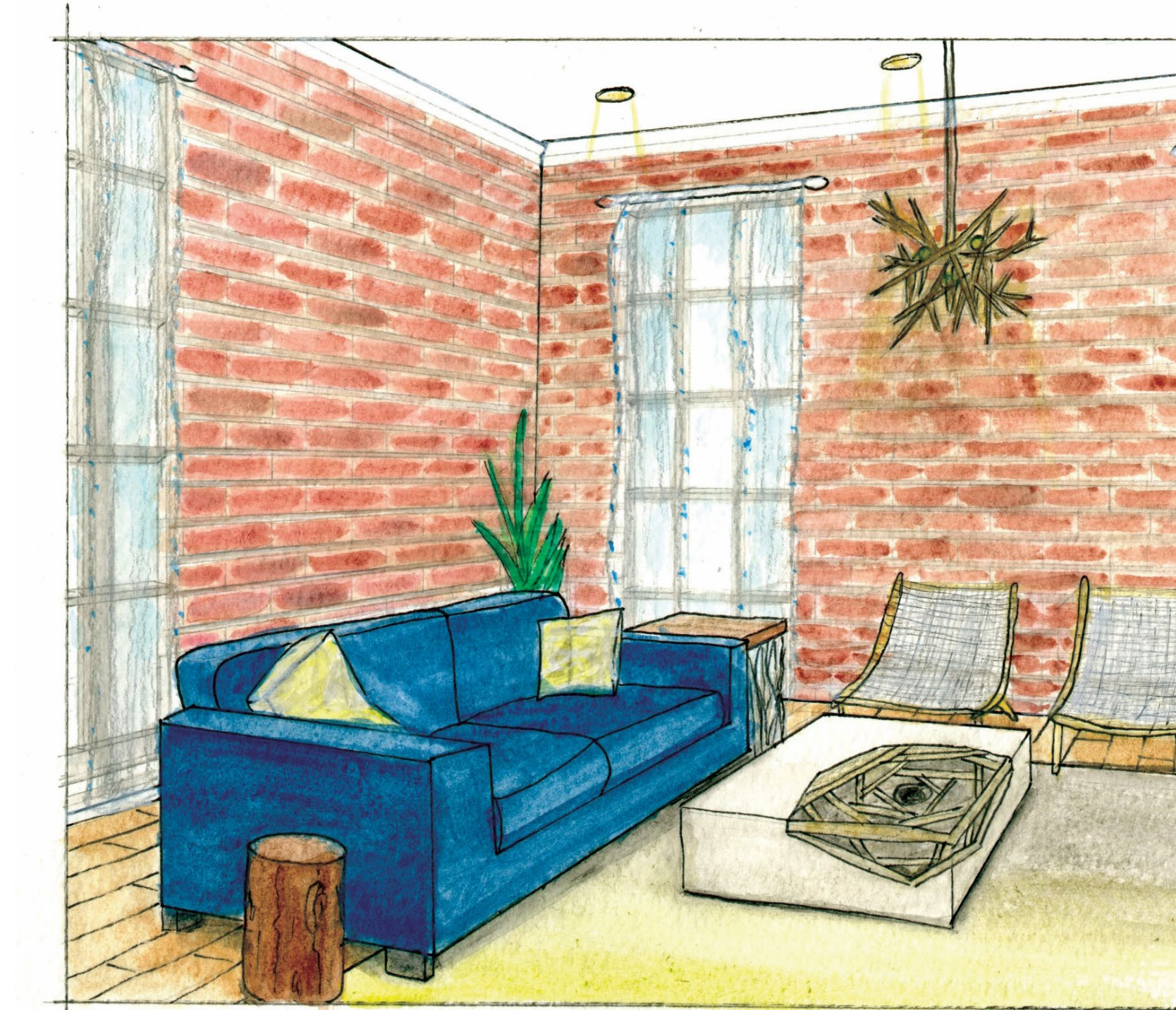
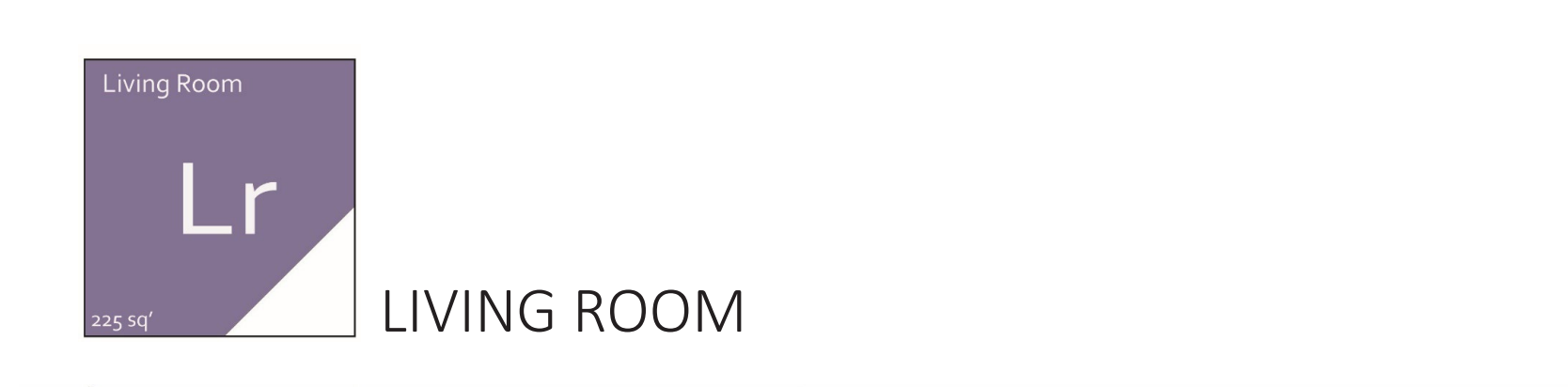
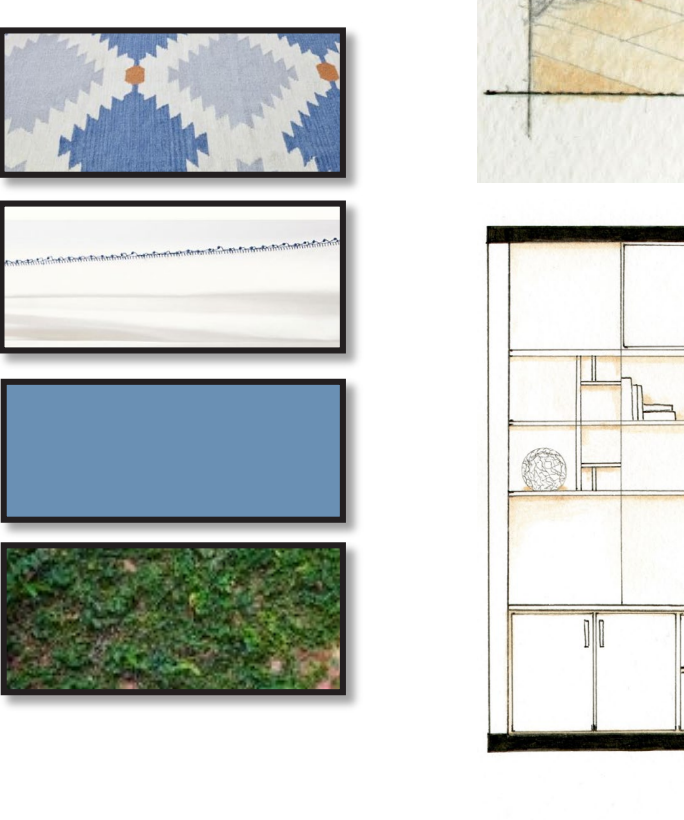
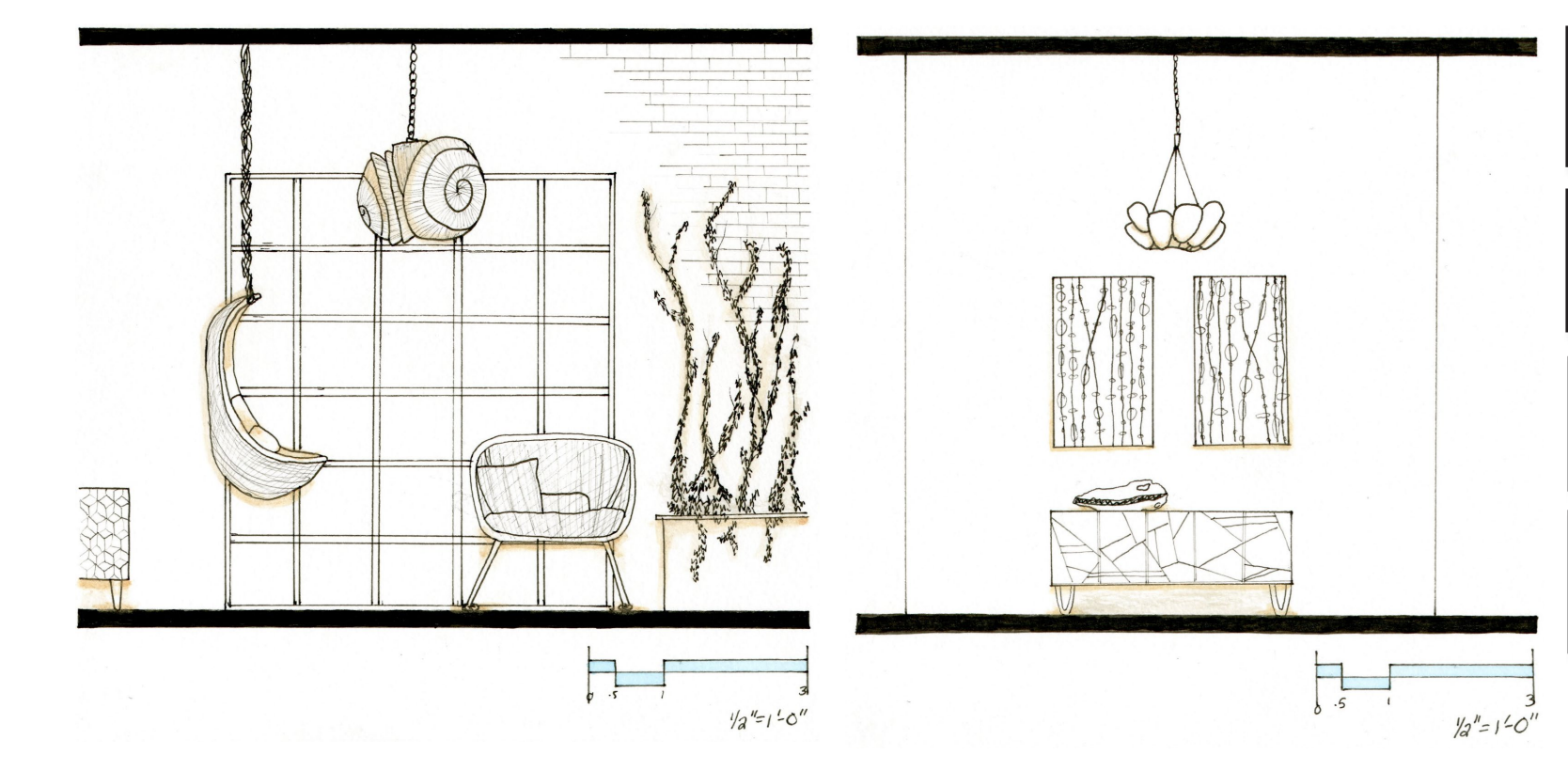
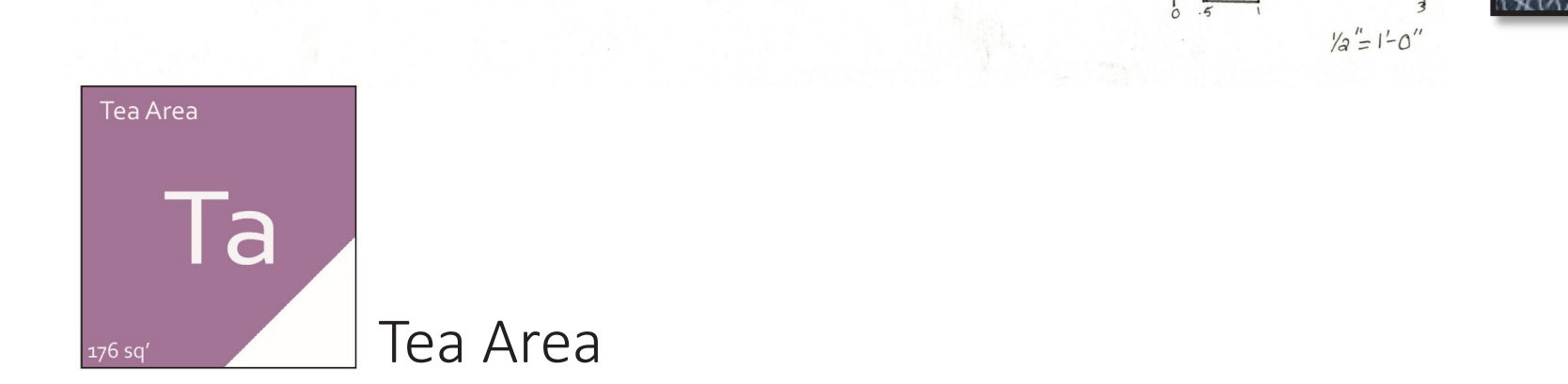
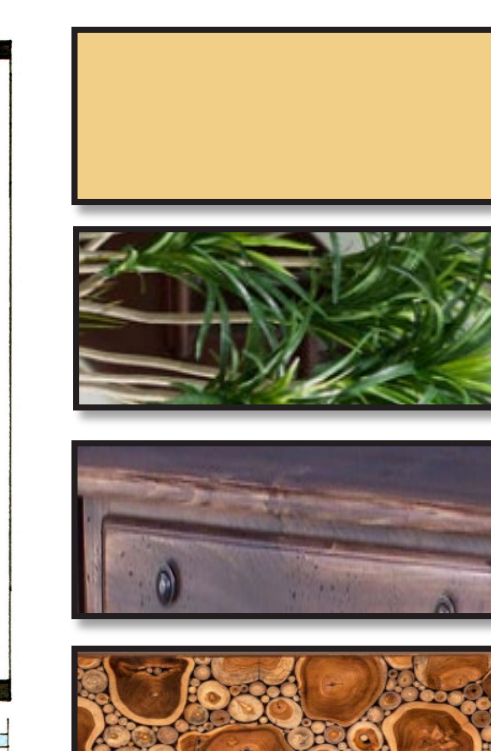
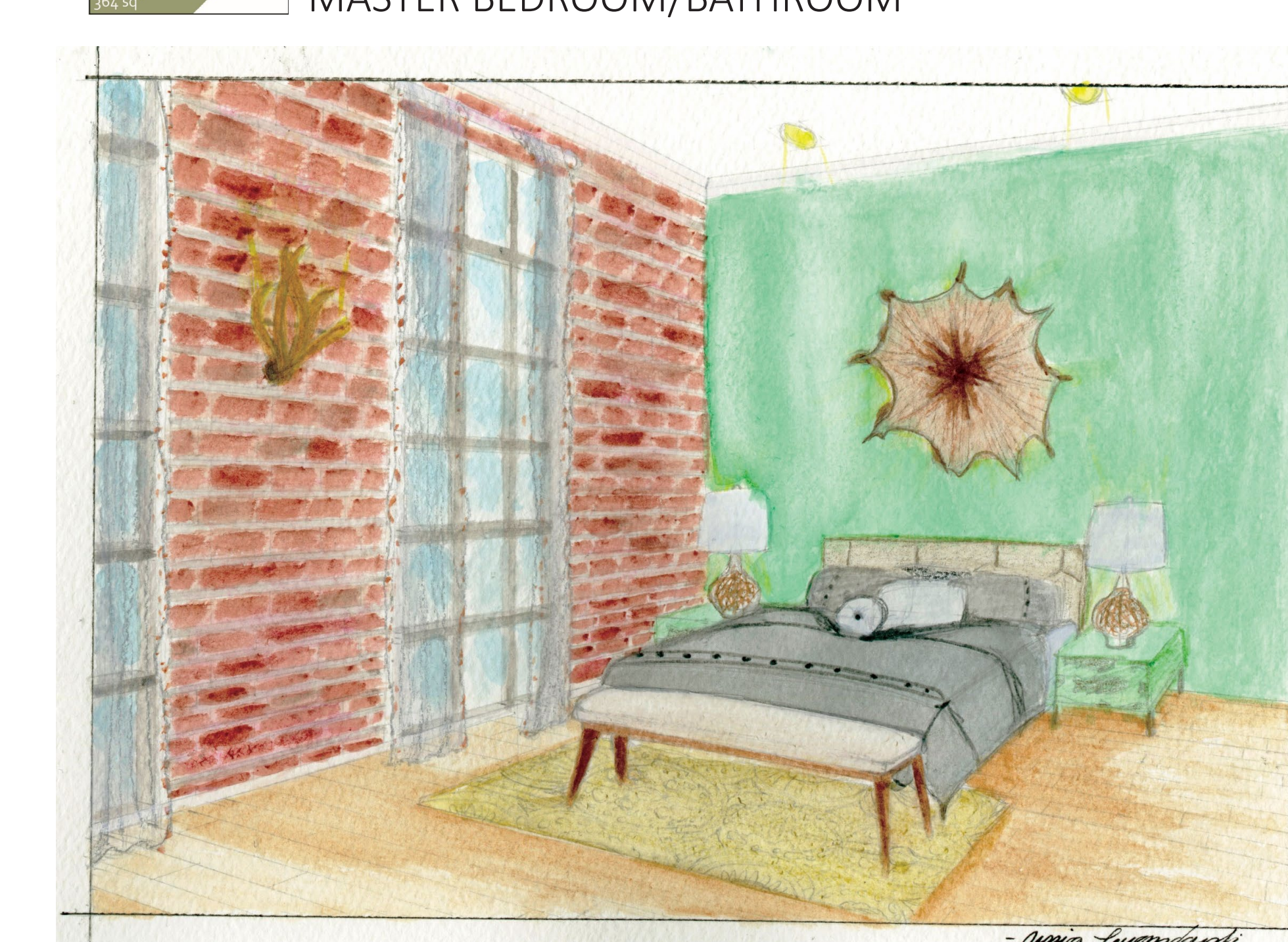
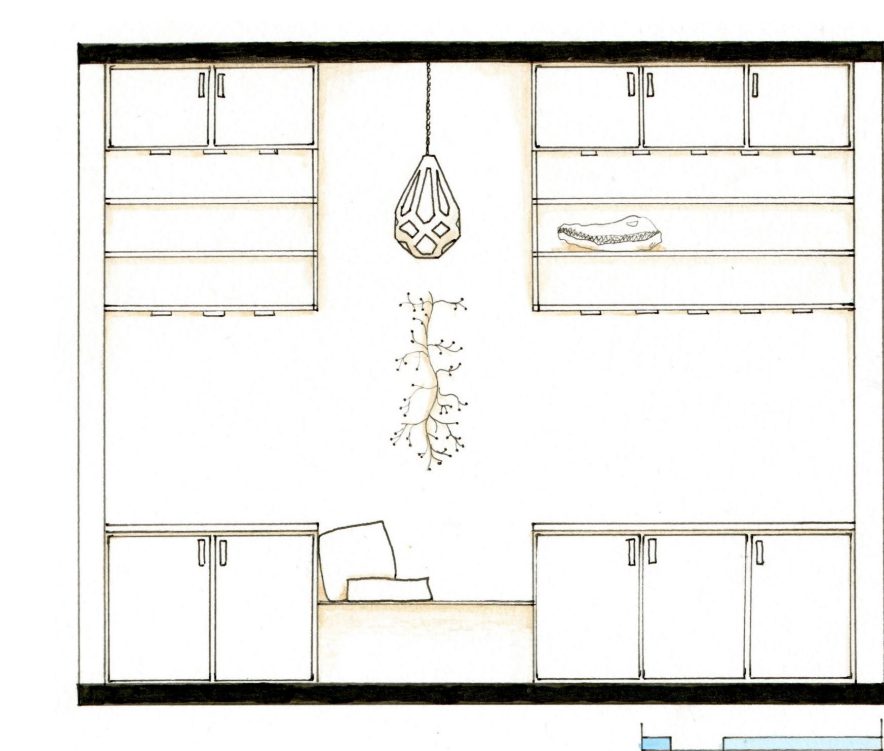
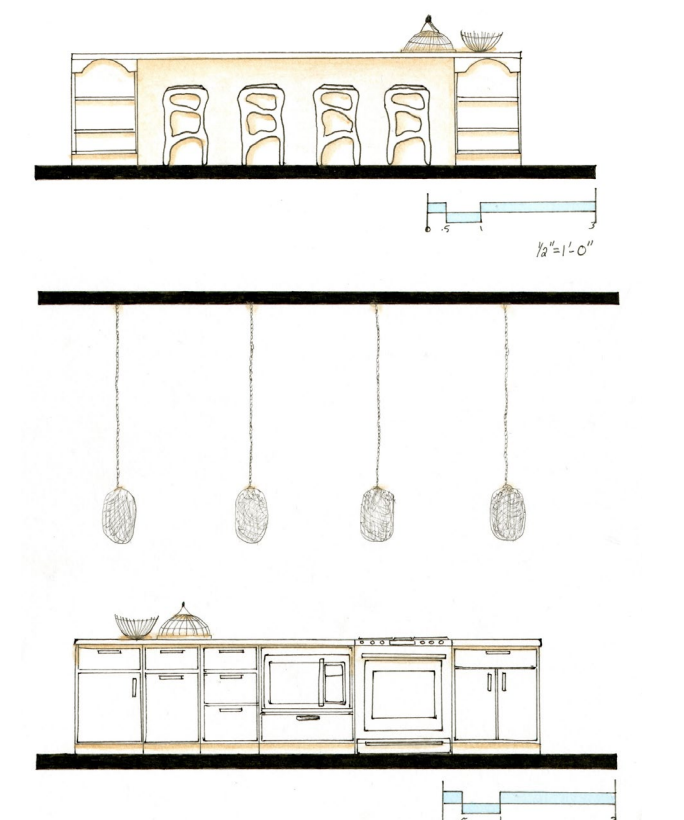
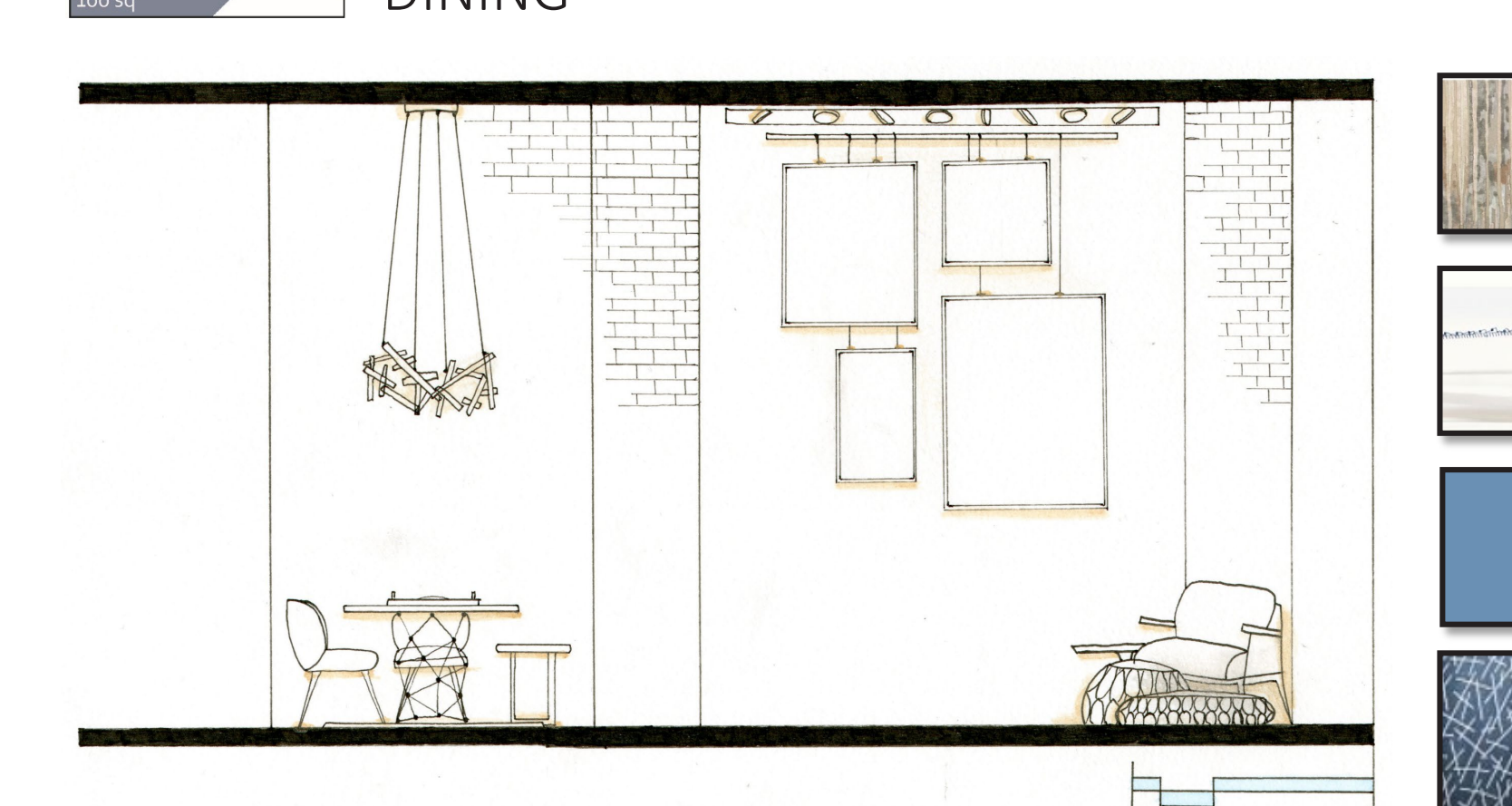
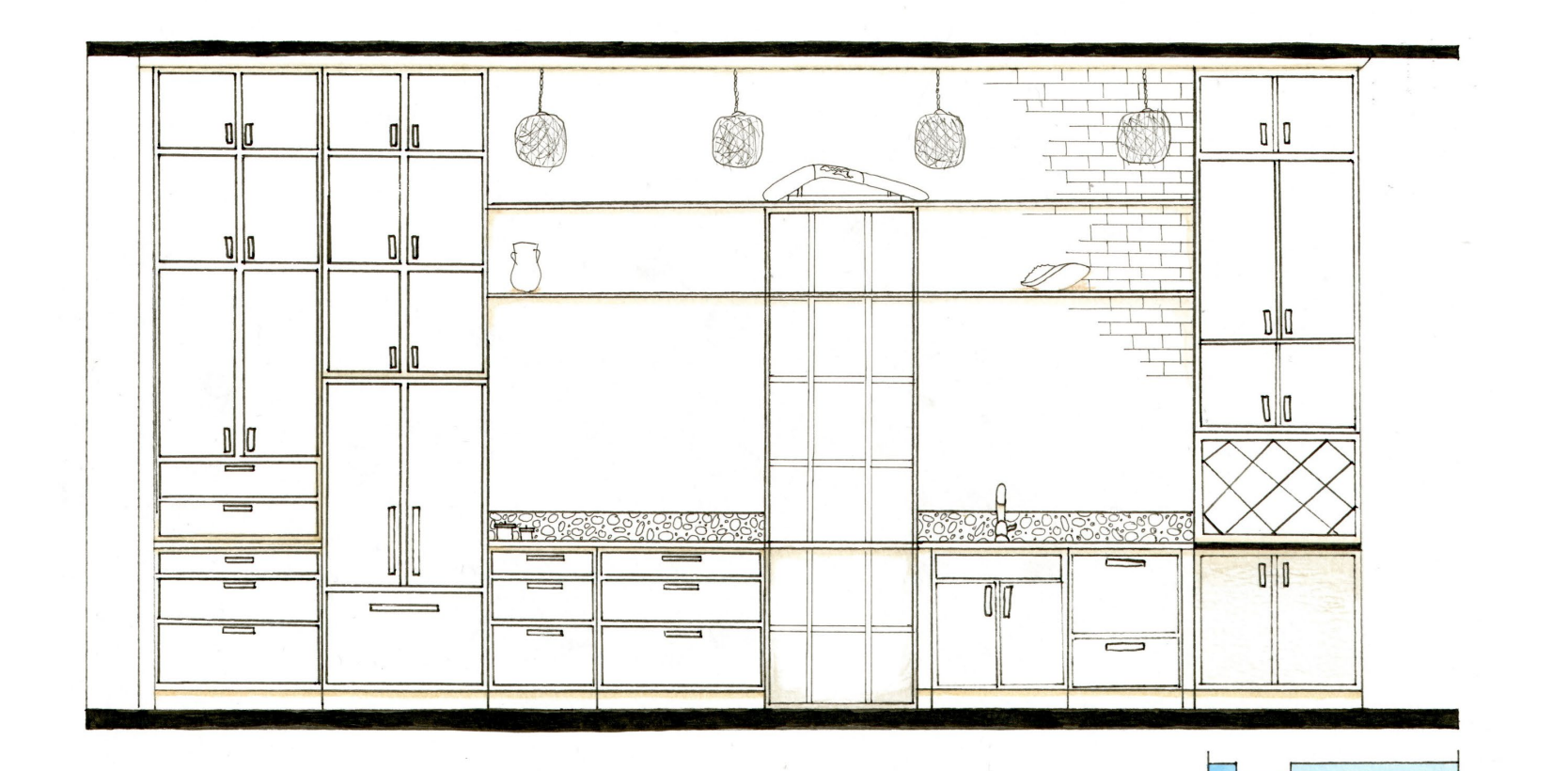
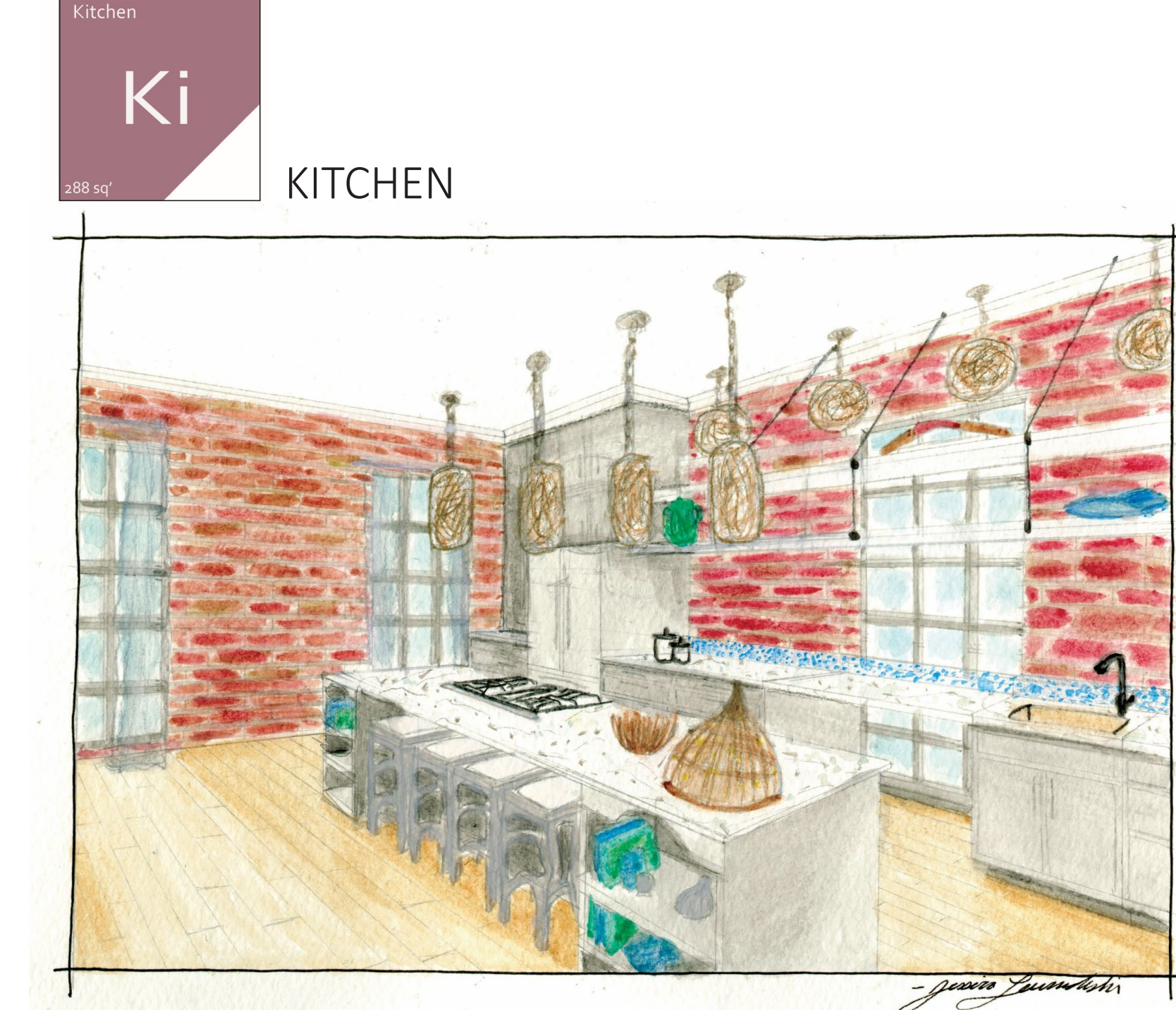


Trevor Frost

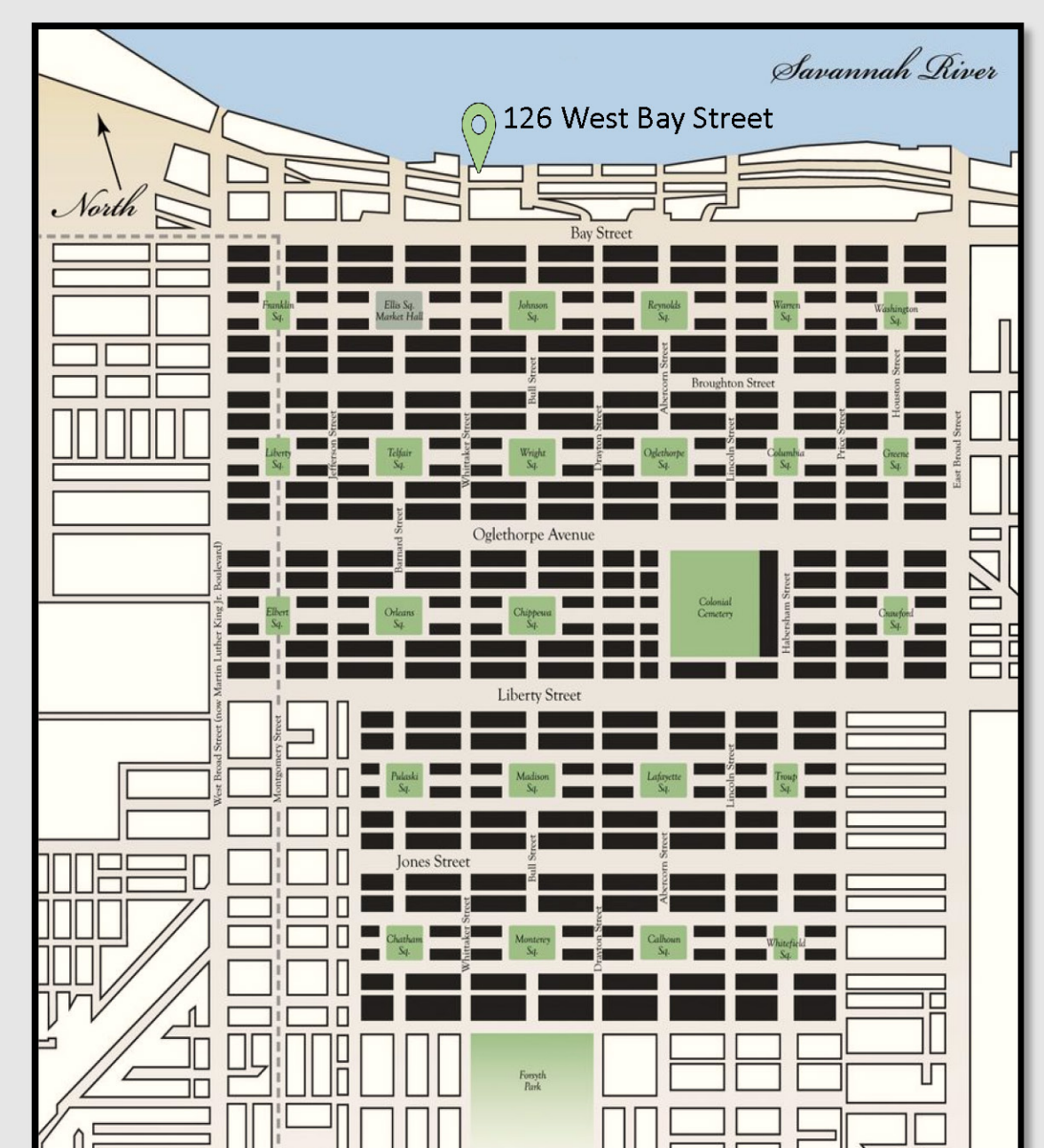
Trevor Frost is an adventurous wildlife photographer from Richmond Virginia who is always searching for the untold story behind the beautiful and illusive natural and cultural world. His photography has allowed him to discover these stories all over the globe with the help of the Eddie Bauer brand and National Geographic having given him a platform to share these photographic stories.



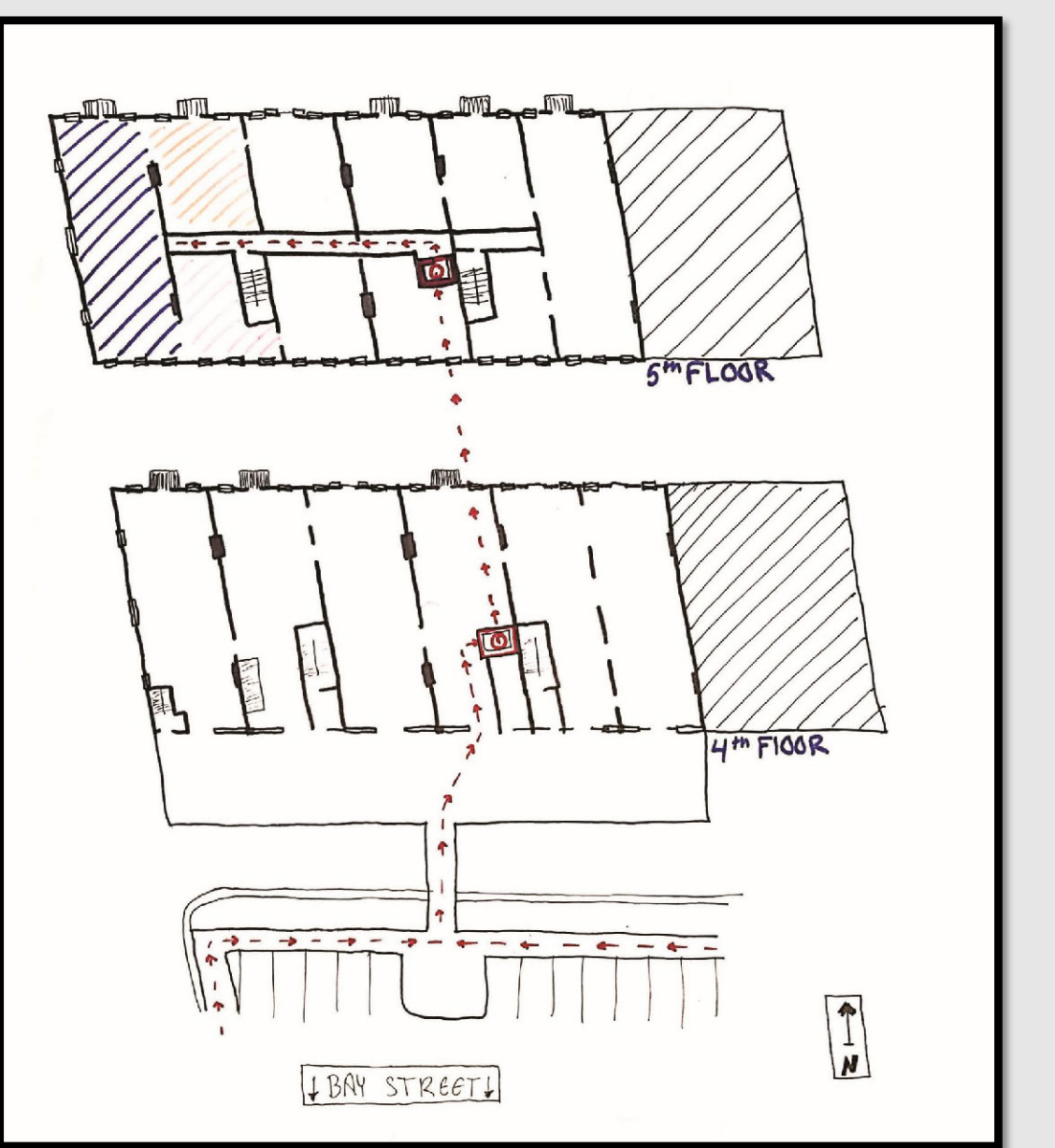
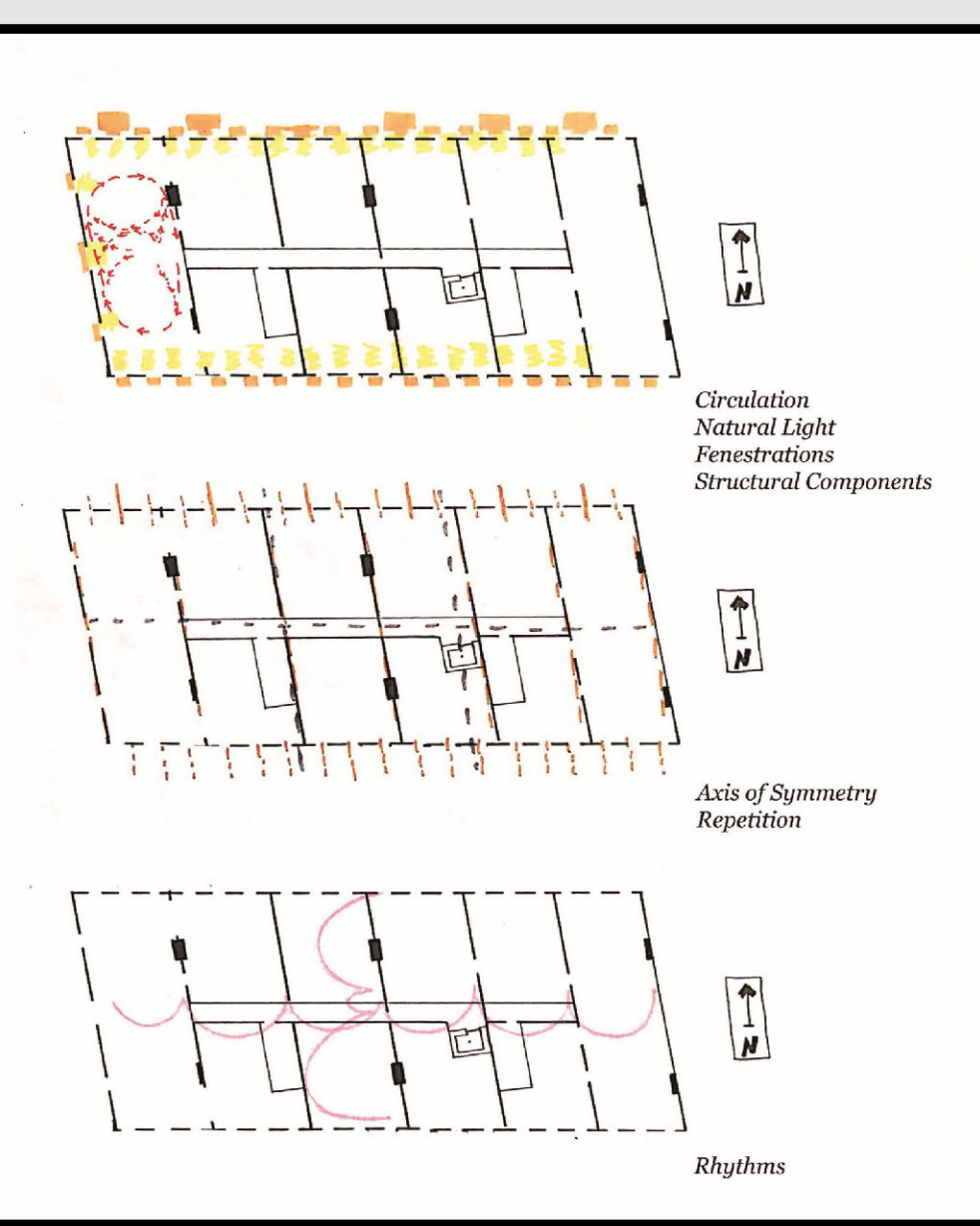
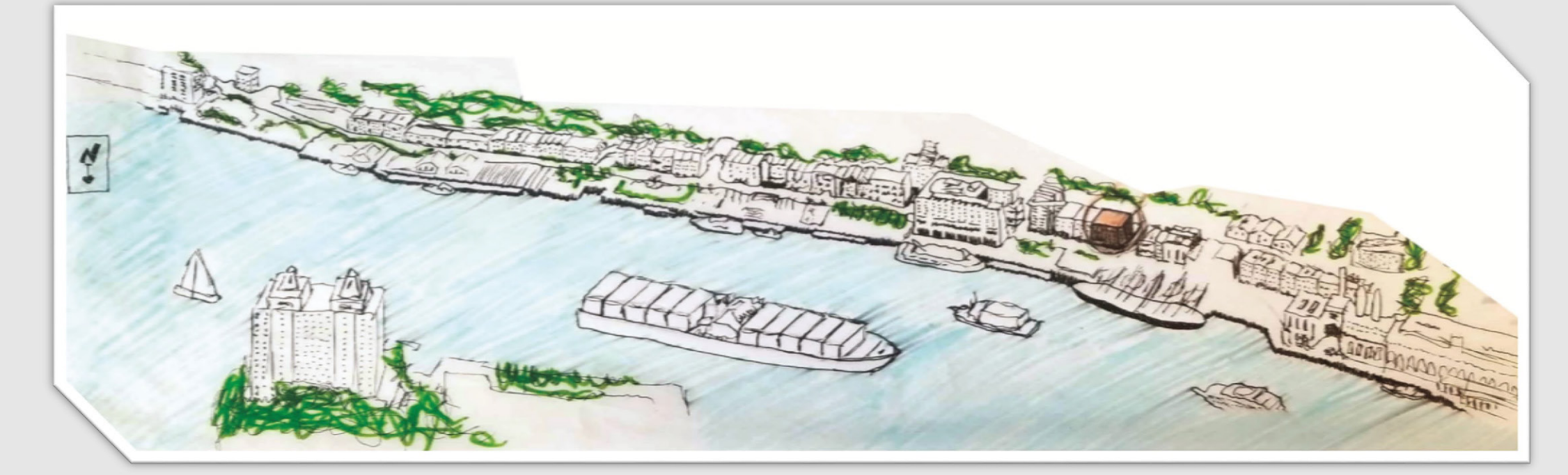
Key Perspectives and Elevations with Material Selections



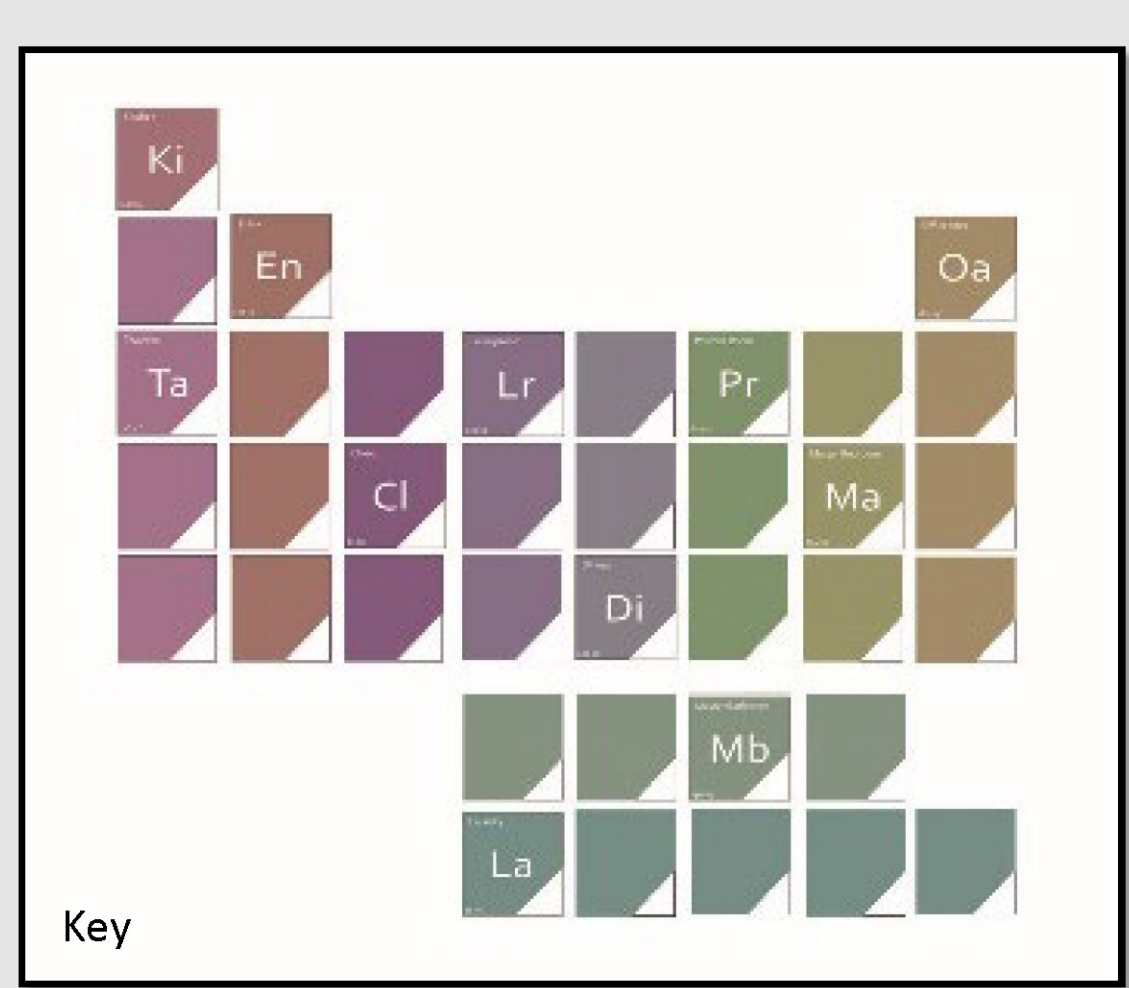
126 West Bay Street Savannah Georgia



Overlooking the Savannah River



Furniture Floor Plan



Original Heart Pine Floors and Brick walls remain on site.

